

Harbor Beach Community Connections

-Where we are headed and why we need you!

Core Strategy *The AHA! Process*

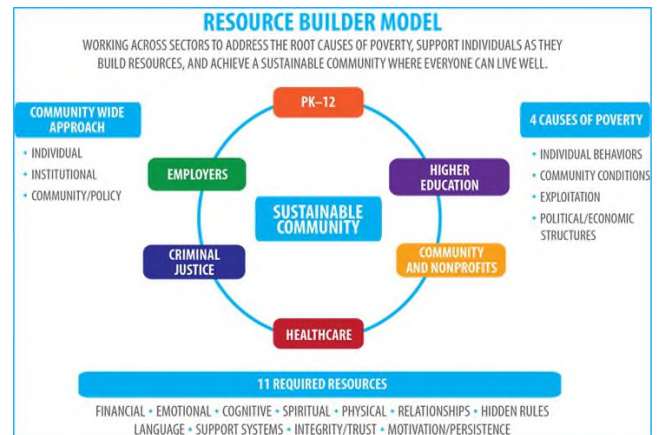
Ruby K. Payne, Ph.D. is the founder of aha! Process. Recognized internationally for A Framework for Understanding Poverty, her foundational book and workshop, Dr. Ruby Payne has helped students and adults of all economic backgrounds achieve academic, professional, and personal success. The aha! Process is based on her expert understanding of the mindsets of economic classes and overcoming the hurdles of poverty. aha! Process developed the Resource Builder Model which is at the center of the Harbor Beach Community Connections Initiative. This model is designed to...

- Work across all sectors of a community to address the root causes of poverty
- Support individuals as they build resources
- Achieve a sustainable community where everyone can live well

The Resource Builder Model includes workshops, books/products, and ongoing support that were created as an end-to-end approach to help all aspects of a community to build a stronger, sustainable community by reducing poverty.

Primary Components of the Model

1. Understanding Poverty
2. Developing Resources
3. Engaging the community
4. Evaluating/improving on a continuous basis



Activities: The following activities have been identified as having the potential to meet the needs of people who are under-resourced in our community. In order to prevent duplication of efforts and achieve efficiency we are meeting with organizations to determine how we can form partnerships and offer services to fill gaps.

1. Community awareness activities with the intent of reducing barriers and stigma
2. Screening and referral to existing services
3. Information regarding existing resources and self-help programs
4. Navigation and assistance enrolling in eligible programs
5. Life skills training utilizing the Getting Ahead in a Getting By World manual
6. Ongoing support & Life Coaching
7. Job Training Programs
 - Job Shadowing
 - Specialized job training
 - Specialized tutoring
 - Job Placement
 - On the job coaching
8. Assistance with basic needs

How can we partner to “create opportunities” in Harbor Beach and the surrounding area?